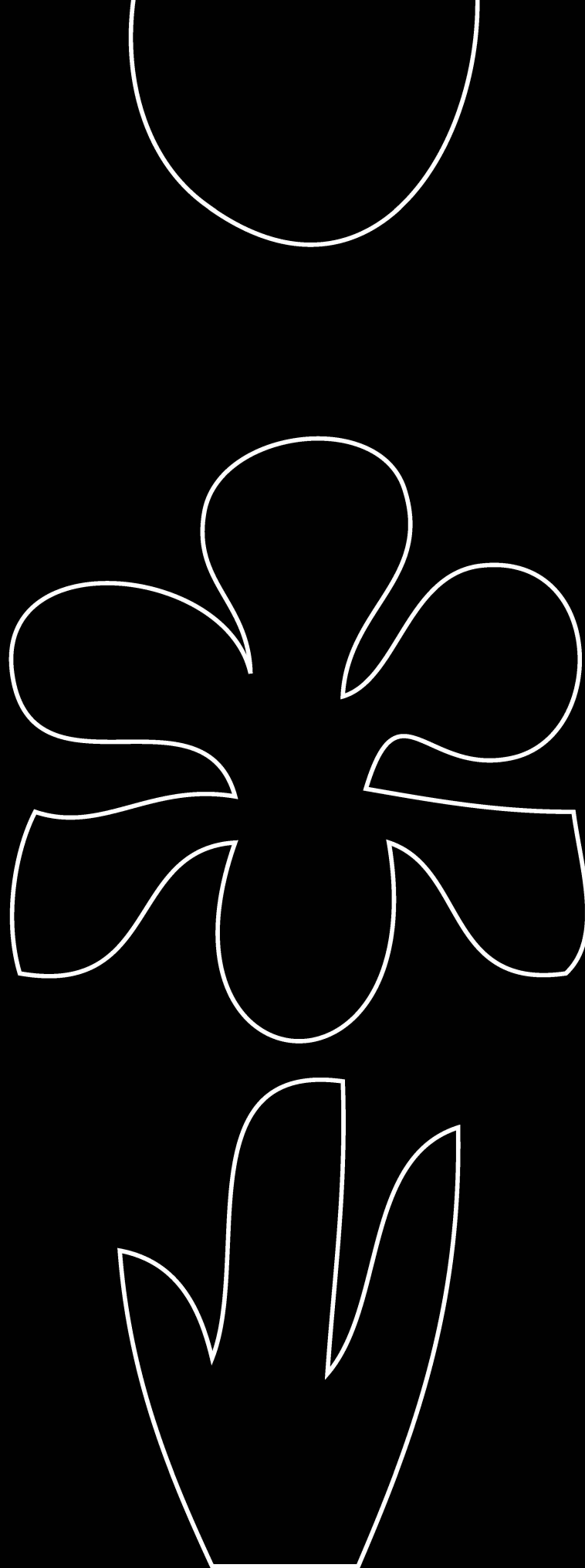




Made in the USA



# Travertini Al Contro

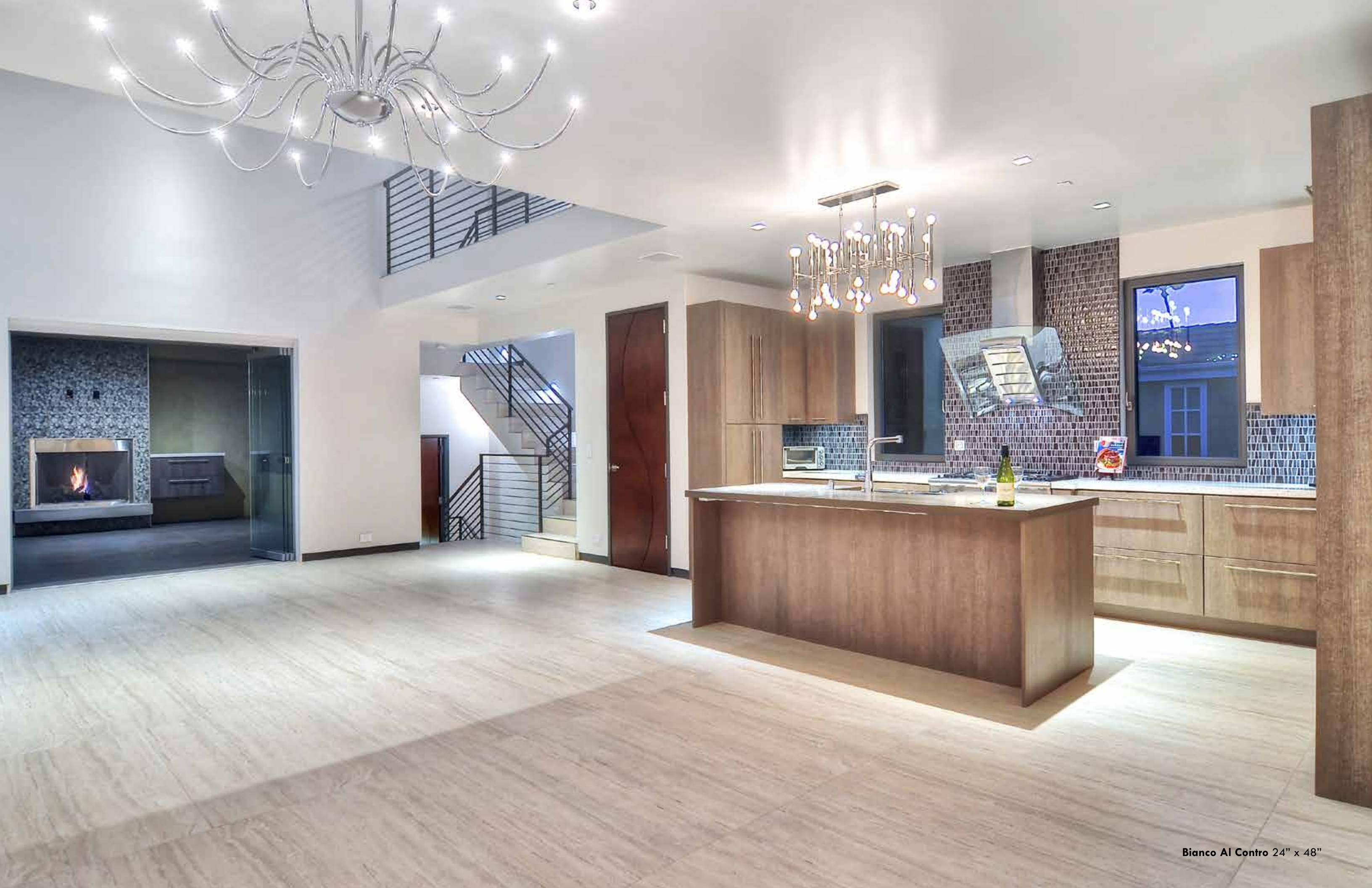




Argento Al Contro 24" x 48"

## Travertini Al Contro Collection





# Travertini Al Contro Collection



Bianco Al Contro



Grigio Al Contro



Argento Al Contro



24 x 48

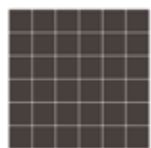


12 x 24

Bianco Al Contro	IRG2448112
Grigio Al Contro	IRG2448113
Argento Al Contro	IRG2448114

Bianco Al Contro	IRG1224112
Grigio Al Contro	IRG1224113
Argento Al Contro	IRG1224114

## Mosaics & Trim



Mosaic

2 x 2 mesh mounted on 12 x 12 sheet



Brick 03 Mosaic

2 x 6 mesh mounted on 12 x 12 sheet



Bullnose

4 x 24

Bianco Al Contro	IRG12M112P
Grigio Al Contro	IRG12M113P
Argento Al Contro	IRG12M114P

Bianco Al Contro	IRG12MB3112
Grigio Al Contro	IRG12MB3113
Argento Al Contro	IRG12MB3114

Bianco Al Contro	IRG424BT112
Grigio Al Contro	IRG424BT113
Argento Al Contro	IRG424BT114



Grigio Al Contro 24" x 48"



Argento Al Contro & Grigio Al Contro various sizes

**C1028**  
**COF**  
 Dry ≥ 0.75  
 Wet ≥ 0.60

**Acutest**  
**DCOF**  
 Wet ≥ 0.42

## Travertini Al Contro Tech Specs

PHYSICAL PROPERTIES	TEST	INDUSTRY STANDARDS	IRIS US RESULTS COLORED BODY
Water Absorption	ASTM C373	0.5% Maximum	≤ 0.1%
Size			
Calibrated (non rectified)	ASTM C499	• Range of Thickness (inch) 0.040	≤ 0.040
	ASTM C499	• Average Facial Dimension ± 0.50%	≤ ± 0.50%
	ASTM C485	• Warpage ± 75% on any edge	≤ ± 0.75%
	ASTM C485	• Warpage ± 50% on diagonal	≤ ± 0.50%
	ASTM C502	• Wedging ± 0.50%	≤ ± 0.50%
Rectified	ASTM C499	• Range of Thickness (inch) 0.040	≤ 0.040
	ASTM C499	• Average Facial Dimension ± 0.25%	≤ 0.25%
	ASTM C485	• Warpage ± 0.40% on any edge	≤ 0.40%
	ASTM C485	• Warpage ± 0.40% on diagonal	≤ 0.40%
	ASTM C502	• Wedging ± 0.25%	≤ 0.25%
Bond Strength	ASTM C482	50 psi or greater	> 200 psi
Deep Abrasion	ASTM C1243	< 175 mm <sup>3</sup>	< 150 mm <sup>3</sup>
Hardness (Mohs scale)		No requirement	≥ 7
Frost Resistance (Freeze/Thaw)	ASTM C1026	No sample must show alterations to surface	No cracking or spalling occurred
Chemical Resistance	ASTM C650	No requirement	Class A
Breaking Strength	ASTM C648	250 lbf or greater	≥ 350 lbf
Coefficient of Friction (static)	ASTM C1028	No requirement	Per collection

Data taken from a representative colored body collection. Individual product testing can be conducted by request.

Coefficient of Friction: All values given are for matte or honed material. No values are given for polished material. Iris U.S. does not recommend polished surfaces in areas subject to exposure from grease, oil or water. (All values are based on ASTM C1028 and Acutest DCOF.)

## Travertini Al Contro Packaging

PRODUCT	SIZE	BOX PIECES	BOX SF	PALLET BOXES	PALLET SF	THICKNESS	WEIGHT LB/SF
Floor & Wall Tile	24 x 48	4	31.668	20	633.36	8	3.83
	12 x 24	8	15.751	32	504.03	8	3.55
Mosaics 12 x 12 Sheet	2 x 6	5	4.896	-	-	8	3.55
	2 x 2	5	4.896	-	-	8	3.55
Bullnose	4 x 24	16	10.39	-	-	8	2.00

LB PER PIECE